

The Corvid Crier

Vol 31, No 4 – MAY 2011

Birdathon is Here! Make May a big month for birds!

Help us raise \$18,000 for Eastside Audubon. We need your help to do it.

We have three Birdathon teams which will be competing for most species seen and most money raised. Which one will you be supporting? Will you be the Rookie of the Year and raise the most money in your first year?

- The Bird Brains will be led by Jim Rettig. They saw the most species and raised the most money last year.
- The Mountains to the Lake team will be led by Andy McCormick. They raised the most money two years ago.
- The Whidbey Windings will be led by Hugh Jennings. They saw the most species two years ago.

All the teams can accept more sponsors. Call the office (425-576-8805) to back your favorite.

They also have openings for new members. **You do not need to be an expert birder. All you need is a willingness to learn and talk to people to sponsor your bird count that day.** These trips are a great way to see lots of birds and learn more about them.

We have seven special field trips. See the Field Trips on page 6 for the details.

May 1, Sun. Brunch, Birds and Bubbly in Duvall (\$125) - leaders are Mary Britton-Simmons, Margaret Lie and Carmen Almodovar

May 14, Sat. Nisqually National Wildlife Refuge (\$25) – leader is Hugh Jennings

May 14, Sat. Rattlesnake Lake and Three Forks Natural Area (\$25) – leader is Andy McCormick

May 17, Tue. Juanita Bay Park (\$25) – leader is MaryFrances Mathis

May 21, Sat. Wine on the Wings, Vashon Island (\$25) – leaders are Tricia Kishel and Tim McGruder

May 25, Wed. Lake Sammamish SP (\$25) – leaders are Sharon Aagaard and Stan Wood

May 26-27, Thu. and Fri. An overnight trip to Black and Robinson Canyons (Sponsors or donation) - leaders are Sharron Aagaard and Stan Wood

Birdathon funds support many aspects of our chapter: our office staff person and office rent and all the benefits we receive as members:

- 10 newsletters per year
- 8 monthly programs
- The Web page
- 75 bird field trips per year
- Children's education
- Conservation advocacy
- Christmas Bird Count
- Volunteer Dinner
- Insurance for field trips
- Our lending library

(Continued on page 3)

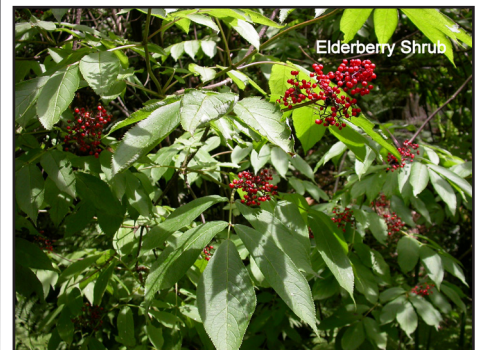
Rita Moore

*WNPS Steward, NWF Steward, and
WSU Extension Forest Advisor*

~ May 28th Program Meeting ~
7:00 p.m.



Honey Bee



Elderberry Shrub

Rita Moore is a Washington Native Plant Society Plant Steward, a National Wildlife Federation Steward, a WSU Extension Watershed Steward and a WSU Extension Forest Advisor. She had been engaged in habitat restoration for 10 years on Mercer Island and participates in various environmental education events. She will talk about native plants and how they are used by our local fauna and why we should all have native plants for habitat in our gardens.

EAS Board Meeting

March 28, 2011

The chair of Eastside Park Rangers Ted Marx met with the board to review the affiliation process. The Rangers will have a link on the home page of the EAS Web site. The link will lead visitors to the Ranger's static page. This page will have information about the Rangers and a link to the Ranger Web site. The Rangers and EAS will work together on field trips at Juanita Bay Park.

The board received a Thank You letter from the Snoqualmie Valley School District for our \$250 grant to a teacher in the district.

The board reached the following decisions:

1. To terminate the online dashboard for statistics.
2. To merge the Announcements and Opportunities email lists and to develop a policy on the use of the new list.
3. To reduce the free membership threshold for Birdathon donors to \$35.00. These donors be made members automatically.
4. To call lapsed members to encourage renewal of their membership.
5. To ask the Membership Committee to consider a family membership category.
6. To update the membership form.
7. To hold its summer retreat on June 26, 2011.
8. To continue promoting the PCC Cash card (Scrip) in The Corvid Crier and at Program Meetings.
9. To have committee chairs write procedures for various tasks to make transitions to their replacements easier.
10. To seek professional assistance with board development.
11. To explore an outreach program to encourage younger people to join the chapter.

The board received a report from Christie Norman on the progress of the Washington Birding Trails Puget Loop Map. Christie learned that the volunteers have visited 153 sites and chosen 60 to be featured on the map. Of these, 28 sites have been selected for stewardship, restoration and education actions. Another 24 sites will be listed on the map. The chapter logo will appear on the map.



Meetings

May 3 (Tues) 6:30 p.m.

Youth Education Committee

We meet the first Tuesday of every month in Adams Hall except December and August. All interested parties are invited. Questions? E-mail: education@eastside-audubon.org

May 5 (Thurs) 10:30 a.m.

Web Committee

Meets first Thursday each month in EAS Office. All interested parties are invited. Questions? Email: webmaster@eastside-audubon.org

May 11 (Weds) 7:00 p.m.

Conservation Committee

Meets second Wednesday each month in EAS Office. Questions? Email Andrew McCormick: amccormick@eastside-audubon.org

May 12 (Thurs) 7:00 p.m.

Photo Group

Meets second Thursday each month in large room upstairs from EAS Office. Questions? Email: Tim Boyer: tboyer@seanet.com

May 23 (Mon) 6:00 p.m.

Board Meeting

Meets fourth Monday of the month. Interested in attending? Please contact the office (425-576-8805)

Eastside Audubon Society

[425] 576-8805 www.eastsideaudubon.org

Hours: Mon, Tues, Fri - 9am - 1pm

"The Mission of the Eastside Audubon Society is to protect, preserve and enhance natural ecosystems and our communities for the benefit of birds, other wildlife and people."

Executive Officers

President	Jim Rettig	jrettigtanager@frontier.com
Vice President	Andy McCormick	amccormick@eastsideaudubon.org
Secretary	Carmen Almodovar	calmodovar@eastsideaudubon.org
Treasurer	Jim Kenney	jimkenney770@aol.com

Board Members

At large board member	Tim McGruder	tmcgruder@gmail.com
At large board member	Edward Freedman	edwardfreedman@comcast.net
Board Ex-Officio	Cindy Balbuena	cbalbuena@deloitte.com
Tricia Kischel	tkischel@audubon.org	
Conservation	Andy McCormick	amccormick@eastsideaudubon.org
Education	Mary Britton-Simmons	mbrittonsimmons@eastsideaudubon.org
Membership	Open	
Financial Development	Tim McGruder	tmcgruder@eastsideaudubon.org

Committee Chairs

Admin. Assistant	Zoe Allen	office@eastsideaudubon.org
Bird Photography	Tim Boyer	tboyer@seanet.com

Committee Chairs (Continued)

Development	Carmen Almodovar	calmodovar@eastsideaudubon.org
EAS Liaison to Eastside Park Rangers	Jill Keeney	j.keeney@comcast.net
Eastside Park Ranger	Ted Marx	tedmarx@comcast.net
Field Trips	Hugh Jennings	(425) 746-6351 fieldtrips@eastsideaudubon.org

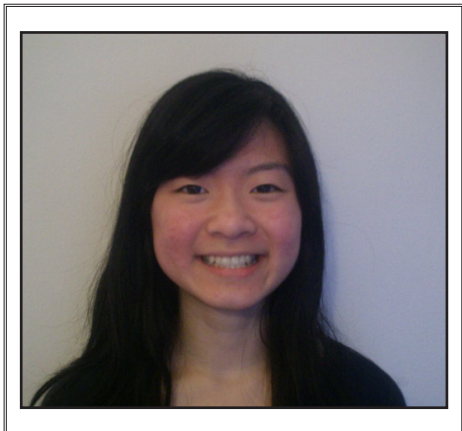
Historian	Bob Gershmel	rwgusnret1986@yahoo.com
Holiday Gift Wrap	Helen LaBouy	helenlabouy@mac.com
Hospitality	Claudia Welch	(425).827.2548
Native Plant Walks	Melinda Bronson	bronson874@aol.com
Nature Walks	Christopher Chapman	(425) 941-3501 cjchapman19@comcast.net

Bird Questions	MaryFrances Mathis	(425) 922-9524
Communication	Open	
Webmaster	Gary Luhm	gluhm@comcast.net
Newsletter	Tamra Chinn	newsletter@eastsideaudubon.org
Birdathon	Andy McCormick	office@eastsideaudubon.org

Directions to Eastside Audubon located at: Northlake Unitarian Universalist Church, 308 4th Avenue South, Kirkland [corner of 4th Ave. S. and State St.]. Take I-405 exit 18 [NE 85th, Kirkland]. Drive west on Central Way to 3rd St. (stoplight). Turn left [South] onto 3rd St. and follow it as it bears left and changes name to State Street. Turn left onto 4th Ave South. TAKE THE BUS! Routes 540, 230 and 255 to State Street in Kirkland.

The Corvid Crier, Vol 31, NO 4
Publication Date: May 1, 2011
Published by: Eastside Audubon Society
P.O. Box 3115, Kirkland, WA 98083-3115
Published monthly by the Eastside Audubon Society except that there are no

issues in January or August.
Deadline for material submission is the first Wednesday of the month preceding publication. **Send material by email to:** newsletter@eastsideaudubon.org **or by mail to the address above.**



2011 Brian Gershon Scholarship Winner

Andrea Wong, a senior at Interlake High School in Bellevue, Is the 2011 Brian Gershon Scholarship Winner. With an interest in zoology since she was a child, Andrea has taken classes such as AP Biology and AP Environmental Science. She was an intern at Mercer Slough Environmental Education Center for two years where she taught after-school environmental classes to elementary students. As a junior she

volunteered at the Seattle Aquarium and this year she has an internship with the School of Aquatic and Fishery Sciences at the University of Washington. This is a research project investigating the environmental effects of geoduck aquaculture. Next year Andrea plans to attend McGill University in Montreal, Quebec to major in biology or environmental sciences, with an emphasis on oceans and the animals within them. We wish her well in her future endeavors.

— Margaret Snell

WELCOME NEW MEMBERS!

From January 1, 2011 through March 31, 2011 we added a total of 170 new members. 161 of those members joined the National Audubon Society and were assigned to our chapter based on their zip code. All were sent welcome packets by volunteer Marlene Meyer. Those mailings included a copy of the latest Corvid Crier, an EAS membership application and a welcome letter.

The nine new EAS members are: Kathy Frank, Carol Furry, Barbara Ghaffari, Phil Katzen, Gloria Kern, Lena Littler, Pamela Roberson, Inger Seiffert & Sara Steuben

Welcome to all! We hope to see you soon at an upcoming program meeting or on one of our many fieldtrips Check out this issue of the Crier for all the Birdathon events in the month of May.

If you have any questions about Eastside Audubon and the benefits of membership the office is open & staffed by knowledgeable volunteers on Mon., Tue., & Friday from 9am to 1pm.

Birdathon

(Continued from cover page)

Here is what you can do - Choose one or more activities:

- Recruit people to sponsor a Birdathon Team. EAS will provide birders to help you.
- Join or sponsor a Birdathon Team. Ask other people to sponsor the team with you.
- Go on a scheduled field trip and make the requested donation.
- Make a Birdathon donation.

The Birdathon Chair is Andy McCormick. Email him at amccormick@eastsideaudubon.org to do your part.

Help Make May a Big Month for Birds.

Marymoor Park BirdLoop News

— Jim Rettig



Clearing out the invasives!

In early April, 13 volunteers spent a good day at Marymoor restoring habitat and building the storage shed. Despite lots of rain on Friday, we enjoyed sunshine on Saturday! See the photos of those clearing blackberries and those putting up the walls of the shed.

Work parties are held every first Saturday of each month, 9 AM to noon. We meet at the SE corner of Parking lot G. Parking passes are provided at no cost. The next work party is scheduled for May 7. Spend a Saturday morning with others who enjoy the outdoors and working for the birds!



The storage shed walls are up!

Have You Re-Charged Your PCC Cash Card?

Many of you have taken advantage of PCC Natural Market Cash (Scrip) Cards purchased through EAS. But have you remembered to re-charge them? After purchasing the initial counter at PCC for any amount you choose using cash or credit card. And the best part is that a full 5% of the amount you put on your card is generously donated to EAS from PCC. You pay nothing extra – every dollar you put on your card goes for

a dollar of groceries. It's fast and easy and you can re-charge it again and again! Buy a PCC Cash Card at the office or online at: www.eastsideaudubon.org.



EagleEye
VISION CARE, P.S.

17320 135th Ave NE, # D
Woodinville, WA 98072
(425) 398-1862

See the birds better!

Bird Of The Month

By Andy McCormick

Black-throated Gray Warbler *Dendroica nigrescens*

<i>Length</i>	5 in
<i>Wingspan</i>	7.75 in
<i>Weight</i>	0.29 oz, (8.4 g)
<i>AOU Band code</i>	BTYW



The Black-throated Gray Warbler is a specialty species of the western United States and British Columbia. Its bold black and white coloration gives it a unique look among western warblers and makes it fairly easy to identify. It is gray above and white below with a black throat and cheek patch and dramatic white eyebrow (supercilium) and mustache (malar) stripes. It has a tiny yellow spot between the eye and bill. The female is lighter in color with gray replacing the black of the male. The song is buzzy and similar to the Townsend's Warbler but with an inflected ending, such as *zee-zee-zee-zee-bzz-zee* or, *buzz-see buzz-see buzz-see-buzz-see-wueeo* (Dunn and Garrett).

This species of warbler is part of the super species *virens* complex formed around the Black-throated Green Warbler that also includes the Golden Cheeked, Townsend's and Hermit Warblers. All five of these species share a black throat, white on the tail feathers, and white wing bars. All belong to the genus *Dendroica*, tree dwelling, from the Greek *dendron*, a tree, and *oikos*, a house or any dwelling place. The species name is from the Latin *nigrescere*, to become dark in color, in reference to its black and gray coloration (Holloway).

The Black-throated Gray is a medium-distance Neotropical migrant that winters in the very south of California, in Baja California Sur, and in the interior of central Mexico (Guzy & Lowther). It returns to Washington in late April to early May. In the southern portion of its range it prefers open mixed or coniferous woodland with brushy undergrowth. In the northern portion it prefers the middle to lower level of coniferous forests leaving the forest canopy to other warblers.

It nests on the extreme ends of branches of Douglas and other fir and juniper trees usually between 8 and 40 feet from the ground. At times the nest can be even lower. The neat cup nest is made of weeds and dry grass and is lined with feathers, fur, hair

and moss. Typically, four creamy white eggs with brown spots are deposited. The Black-throated Gray Warbler has not been studied well and many aspects of its breeding biology including the incubation period and time to first flight are not known (Kaufman). It feeds on insects and is particularly fond of small green caterpillars in oaks and firs. It will also fly out to capture flying insects.

The species is fairly common and it is apparently not bothered by human activity. The population appears to be stable and it is protected under the Neotropical Migratory Bird Conservation Act, a cooperative agreement among Canada, Mexico and the United States. It does however seem that deforestation in both its breeding and wintering areas poses some risk to this species (Dunn & Garret).

An audio recording of the Black-throated Gray Warbler can be heard at the Macaulay Library of the Cornell Lab of Ornithology at <http://macaulaylibrary.org/audio/50127>

Photo credit Mike Hamilton. References available upon request from amccormick@eastsideaudubon.org



FIELD TRIPS

May 1 (Sunday) 11a.m. to 5p.m.

Brunch, Birds and Bubbly

\$125 donation to EAS for Birdathon

Start your day with brunch at a home on a ridge overlooking the Snoqualmie Valley and the Cascade Range. Join John Tubbs, Master Birder and nature photographer (www.tubbsphoto.com) on a birding trip in the Valley. Later in the afternoon, celebrate the birds you have seen with dessert and champagne. In the mood for more birding? Venture out from the sunroom and walk 16 acres of wooded trails. Limit: 8. Hosted by Carmen Almodavar, Margaret Lie, and Mary Britton-Simmons. Donate online or bring cash/check. To sign up/more details, contact Mary: 360-794-7163; mbritton1@earthlink.net. Limit 8

May 14 (Saturday) 8:00 a.m.

Rattlesnake Lake And Three Forks Natural Area

\$25 donation to EAS for Birdathon

We'll drive to North Bend and bird the shore of Rattlesnake Lake and walk to Christmas Lake through mixed woodlands. We should see some migrating songbirds and the resident woodpeckers, raptors and sparrows. Three Forks in Snoqualmie offers an opportunity for ducks, grassland birds, and springtime surprises. Meet at the Tibbetts Park & Ride behind the multi-story garage in Issaquah (I-90, Exit 15) before 8:00 a.m. Bring a snack or lunch. Return by 2:00 p.m. Passenger cost/person \$5.00. Donate online or bring cash /check. Leader: Andy McCormick. For information call 425-637-0892; amccormick@eastsideaudubon.org.

May 14 (Saturday) 7:30 a.m.

Nisqually NWR

The Nisqually NWR offers a diverse combination of habitats and birds. The new boardwalk is a mile walk from the visitor center. The boardwalk is another mile walk from which you can observe the tidal flow. The total distance from the visitor center to the end of the boardwalk and back is 4 miles. Early spring migrants should be arriving to join regulars such

as woodpeckers and Great Horned owls. A variety of still wintering waterfowl and raptors should be present as well. Admission is free if you have a National Golden Pass or Federal Duck Stamp. Meet before 7:30 a.m. at north end of the Wilburton Park-N-Ride (I-405, exit 12) to carpool. Bring a lunch. Passenger cost/person \$12.00 plus \$25 donation to Eastside Audubon. Hugh Jennings 425-746-6351.

May 17 (Tuesday) 8:00 a.m.

Juanita Bay Park Bird Walk

\$25 donation to EAS for Birdathon

See what birds are in the Park and on the Bay. Varied habitats within the park host a vast array of species, and the quiet of an early morning is one of the best times to explore. We'll look for spring migrants, resident birds, as well as raptors and waterfowl. Bring binoculars and meet in the parking lot. Meet before 8:00 a.m. at the parking lot at Juanita Bay Park. Over around Noon. Donate online or bring cash/check. Leader: MaryFrances Mathis. For further information call 425-922-9524.

May 21 (Saturday) 7:30 A.M. Wine On The Wings Vashon Island

\$25 donation to EAS for Birdathon

Vashon Island contains a wealth of birding opportunities in May, from shorebirds at Point Robinson to Purple Martins and Brant at Tramp Harbor to Harlequin Ducks at the Tahlequah dock. Our birding route could also take us to Fern Cove, Fisher Pond, KVI Beach, Judd Creek, Spring Beach, and Quartermaster Harbor. After lunch wine tasting a local winery with award-winning wines. There may be a charge for the tastings. Next, we bird our way back to the ferry. The goal is to have fun, fun, fun! Meet before 7:30 a.m. at the Wilburton Park-N-Ride to carpool. Bring a lunch and dress for the weather. Ferry cost will be shared and carpool cost is \$8/person. Donate online or bring cash/check. Co-leaders: Tricia Kishel 206-948-3922 and Tim McGruder.

**May 23 (Monday) 9:00 a.m. to noon
Birding the Hot Spots of King County**

Monthly field trip on the **fourth Monday** of each month to wherever the birds are. Meet before 9:00 a.m. at the north end of the Newport Hills Park-N-Ride. Plan to be back by noon. Passenger cost/person \$2.00 Hugh Jennings, 425-746-6351

May 25 (Wednesday)

Lake Samamish State Park

\$25 donation to EAS for Birdathon

This urban park offers a wide assortment of birds and habitats due to its varied ecosystems. The trip will involve walking approximately 2-3 miles. Dress appropriately (rainproof in layers; some of the trails can be muddy if wet). Just inside the main entrance, take the first left into the large parking lot and meet at the northeast end. Donate online or bring cash/check. Co-leaders: Sharon Aagaard and Stan Wood. Call Sharon with any questions, 425-891-3460.

May 26, 27 (Thursday/Friday) 5:30 a.m.

Black Canyon and Robinson Canyon Overnight Bird Hike & Birdathon Combination of pledges and a donation to Birdathon

Sharon Aagaard and Stan Wood will co-lead this 2-day, overnight field trip. Three cars of 12 people, including 2 leaders will leave from the multi-story Tibbetts P & R lot in Issaquah at 5:30 am on May 26 and return by 5:30 pm on May 27, overnighiting at a motel in Ellensburg. Carpool cost: \$25/person. Each participant will seek five pledges or combine pledges and a personal donation to Birdathon.

Both canyons are very birdy and located in the L.T. Murray State Wildlife Recreation Area. The Black Canyon bird hike is 6 miles roundtrip, with a gradual elevation gain of 1250 feet (for more details Google or see "Best Desert Hikes Washington"). The Robinson Canyon bird hike is 6 miles roundtrip, with a gradual elevation gain of 1000 feet and involves crossing lower Robinson Creek (note: we will not cross upper Ainsley Creek nor scramble to a viewpoint). Both hikes are rated "difficult" in the Dessert Hikes book, however, I think they are "moderate."

Some of the birds we hope to see and/or hear: Calliope Hummingbird, Ruffed Grouse, Western Wood-Pewee, Hammond's Flycatcher, Pacific-slope Fly-

catcher, Cassin's Vireo, Warbling Vireo, House Wren, Western Bluebird, Mountain Bluebird, Swainson's Thrush, Hermit Thrush, Nashville Warbler, Yellow Warbler, Townsend's Warbler, MacGillivray's Warbler, Wilson's Warbler, Yellow-breasted Chat, Western Tanager, Black-headed Grosbeak, Lazuli Bunting, Bullock's Oriole, sparrows, swallows, birds of prey, and hopefully Great-horned and Long-eared owls (have nested in Black Canyon). For more information/sign up contact Sharon Aagaard: 425 891-3460; scormieraa001@hotmail.com.

Marymoor Work Party

May 7 (Saturday) 9:00 a.m. to noon

Marymoor Birdloop Restoration

Come and Join Us! We meet the first Saturday of each month at 9 am. All are welcome to meet at the Marymoor Park BirdLoop Kiosk - parking lot G. A free parking pass will be provided. If you wish bring water and a snack; gloves, a shovel and/or a rake.

Meeting Places for Field Trip

Kingsgate Park and Ride:

1300 116th Way NE, Kingsgate. I-405 exit 20B northbound or 20 southbound, N. E. 124th St. Go west to light at 116th Ave. NE, then right (north) a few blocks to P&R (on the left). Meet in the S.E. corner.

Newport Hills Park and Ride:

5115 113th PL NE, Newport Hills. I-405, exit 9.

South Kirkland Park and Ride:

10610 NE 38th Pl. 108th Ave. NE, just north of hwy 520 and Northup Way.

Tibbetts Park and Ride:

1675 Newport Way NW, Issaquah. I-90, exit 15. Turn right (south). Go past the new multistory Issaquah Park & Ride to the 3rd traffic light. Turn left (east) on Newport Way NW. Go one block then turn right (south) into the P & R. Meet at the west end of the parking lot (across the street from the large parking garage) to carpool.

Wilburton Park-N-Ride:

I-405, exit 12.

Native Plant Walks

Eastside Audubon & WNPS Joint Field Trips www.wnps.org

Sunday, May 1, 2011

Tumwater Canyon and Ohme Gardens, Wenatchee

This trip will be an all day excursion. The focus is primarily on plants. We will stop at the Swiftwater picnic area in Tumwater Canyon where we will scout for early natives. This site is known for its ecological diversity. We will continue to Wenatchee and the Ohme Gardens which have native plant areas boasting 25 species; of which many are indigenous to the east side of the Cascades. The Ohme Gardens boasts great views, natural rock, waterfalls, and magnificent views of the Columbia Valley. A docent guide to the gardens will be provided. Garden entry fee \$7.00. Carpool fee from Seattle to be determined (about \$10-13 per person.) Bring a picnic lunch and water, sturdy shoes and be prepared for variable spring weather. You must sign up in advance by 5 PM, April 29: wnptripper@gmail.com bronson874@aol.com. This trip is dependent on sufficient registration and willing drivers. Leaders: Louise Kulzer and Melinda Bronsdon.

May 21 (Saturday) 9 a.m.

Magnuson Park Wetland Complex

Come and join Suzanne Anderson (Wetland Biologist) for the follow-up to the March trip led by Dyanne Sheldon introducing the design of the new Wetland Complex at Magnuson Park. This trip will focus more on the plants. After a brief review of how water moves through the wetland, Suzanne will take the group around and observe the wide variety of emergent (rushes, sedges, bulrushes, etc.) and wetland shrub species that have become established. She will also discuss how the different hydrologic regimes in the wetland complex determine where species grow. It will be an easy walking tour, but rubber boots are recommended.

Participants will be exploring portions of the wetland complex that are normally off-limits to park visitors. Meet at Magnuson Park at the NE 65th St entrance off of Sand Point Way. Proceed east down the hill. Park in the lot to the left after you pass Sports Field Drive. Meet at the north east portion of the parking lot. Questions and to sign up: Suzanne Anderson at suzanne.anderson@otak.com. Limit: 15

May 22, (Sunday) 10 a.m.

Twin Falls State Park, North Bend.

This short trail with magnificent waterfalls offers a selection of infrequently seen understory natives such as the showy Scouler's Corydalis; relative of the native bleeding heart. The three mile round trip trail follows the north fork of the Snoqualmie River and offers some good birding as well. American Dippers nest along the river and are frequently seen from the trail. A plant list is available on the WNPS website. Driving directions and carpool details provided at sign up. Contact leader Becky Chaney (former Park Steward) to sign up: 425-880-4220 or becky@chaney.org

May 28, (Saturday) 10 AM

Pioneer Park, Mercer Island, JOINT with Mercer Island Parks

Come along and learn from Rita Moore (Native Plant Steward).how to identify native herbs, particularly early flowering species. This is Rita's specialty area of knowledge. Suitable for beginners as well as those interested in native American uses of plants, Dress for the weather. High winds cancel Meet at the kiosk on the corner of Island Crest Way/68th St., Mercer Island. For a map of the park and parking: <http://www.mercergov.org/files/pioneerparktrails.pdf> No need to sign up. Questions? Contact Rita Moore: rmoore@eds.org or 206-275-3883.

Parents and children over 8 are welcome on all trips.

***FRS Radio owners: please consider bringing them on trips.*

***See www.eastsideaudubon.org/events/ for the latest information and for reports of last month's field trips.*

The Corvid Crier

Eastside Audubon Society

P O Box 3115

Kirkland, WA 98083-3115

Address Service Requested

NONPROFIT ORG

US POSTAGE

PAID

KIRKLAND, WA

PERMIT NO. 308

Yes! I'll support Eastside Audubon to preserve bird habitat and educate our community with my tax-deductible membership

Mail form to: PO Box 3115
Kirkland, WA 98083-3115

- \$25 Web Member \$250 Heron Club
 \$35 Corvid Club \$500 Osprey Club
 \$100 Goldfinch Club \$1000 Eagle Club
 Other Amount \$ _____

Enclosed is my check made payable to: **Eastside Audubon**

Please charge my credit card:

___ Mastercard ___ Visa Card

Number _____ Exp Date _____

Signature: _____ Date _____

In addition to helping to fund our general operations, your membership at a level above Corvid Club will go to support our camp scholarship fund for low-income children, our college scholarship fund, grants to teachers, and habitat conservation.

Name _____ Telephone (day/eve) _____

Address _____ City _____ State _____

Email _____ Zip + Ext _____

- Please contact me about volunteer opportunities
 Please add me to your *Conservation* email list
 Don't mail announcements and the newsletter to me.
 My employer matches contributions. I will enclose/send matching information to you

Planned Giving

Consider giving a planned gift to Eastside Audubon to support environmental education and conservation for generations to come. Because Eastside Audubon is a 501(c)(3) nonprofit organization, your charitable gift will be tax deductible. Your gift can go toward the permanent endowment fund, to a specific program or as a gift to our general operating fund. Remember 100% of your contribution will go to fund the programs of Eastside Audubon.

- I would like to receive information on making a planned gift to Eastside Audubon I have included Eastside Audubon in my will



Printed by EcoGraphics with soy ink on recycled, forest friendly paper.

