

The Corvid Crier

www.eastsideaudubon.org

facebook.com/eastsideaudubon

twitter.com/EastsideAudubon

VOL 33, No 4 – MAY 2013

Corvid Crier Goes All Online in June

Bittersweet as it is to report, this edition of *The Corvid Crier* is the last that will appear in print.

On June 1, the *Crier* will become an e-newsletter: You'll receive it in your email inbox as a message containing summaries of the month's stories and announcements, with links to the Eastside Audubon website for the complete stories.

When a tradition gives way to a new technology the change can be unsettling. The *Crier* has been coming out in print since

Continued on page 2

Let the Birdathoning Begin

It's May, and Birdathon is here!

This year there are plenty of ways for you to be part of Eastside Audubon's big May fundraising campaign, whether you bird for pledges, pledge to another birder, or simply make a donation.

However you contribute, the birds will benefit doubly this year thanks to a generous promise from the Melody S. Robidoux Foundation to match every Birdathon dollar we raise up to a total grant of \$15,000.

The foundation is a philanthropic organization created by its namesake, whose husband, Mick Thompson, serves on its board and is also our chapter photographer.

New for Birdathon 2013

This year we have new trips and extra support to help you have a fun and successful Birdathon:

Green birding. Urban birding by bus with the Greener Herons on May 25. (See page 5.)

Weekend walks and trips. At least one trip every Saturday, including a May 18 walk especially for families. (See page 5.)

Introduction to Bird Photography. Learn the basics from EAS experts, and Omega Photo of Bellevue will make a Birdathon

Continued on page 6

May Program in Issaquah

A Kid's Eye View of Birds and Birding

A Kid's Guide to Birding
with

Lorenzo Rohani

Saturday, May 18

2:30 p.m. — Hospitality

3 p.m. — Program

Issaquah Valley Elementary School

555 NW Holly Street

Issaquah

Free and open to the community

Thirteen-year-old Lorenzo Rohani and his dad, Michael, have traveled thousands of miles together birding and photographing birds.

Their book, *A Kid's Guide to Birding*, is full of tips for kids about how to get started in birding, where to find birds, and ways to identify them. It also shows projects you

can do to bring birds into your own backyard.

Lorenzo is the speaker for our May program on Saturday afternoon, May 18, in Issaquah. He'll tell about adventures he's had looking for birds, share fun facts he's learned, and show some of his beautiful photographs. Grownups say his talk is as entertaining and informative for them as it is for kids.

To read Lorenzo's blog and learn more about him, visit his website, kidsbirding.com.

Please note: This event takes the place of a fourth-Thursday evening program in May.

Make a Day of It

Pair the afternoon program with a 10 a.m. family birding walk at Lake Sammamish State Park in Issaquah. An easy stroll designed especially for kids.

Early birds can make it a trifecta with a 5 a.m. Dawn Chorus walk at the park.

See page 4 for details about both May 18 walks in Issaquah.



Lorenzo Rohani by his father, Michael Rohani.

May Meetings

Unless noted, meetings are at Northlake Unitarian Universalist Church 308 4th Avenue South, Kirkland, downstairs entrance (State Street side).

Conservation Committee

May 8 (Wednesday), 7 p.m.

Meets the second Wednesday of every month except July and August. An effective group engaged in activism and hands-on conservation projects. Email Peter Marshall: psmarshall@comcast.net.

Photo Group

May 9 (Thursday), 7 p.m.

Meets the second Thursday of every month in the church sanctuary. All levels welcome; if you like, bring photos on a jump drive to share. Email Larry Engles: engles@ridesoft.com.

Youth Education Committee

May 14 (Tuesday), 6:30 p.m.

Meets the second Tuesday of every month except December and August. Open to anyone who likes to share nature with youth. Email education@eastsideaudubon.org.

Board Meeting

May 28 (Tuesday), 6:30 p.m.

Interested guests may attend the monthly board meeting. Email Andy McCormick: amccormick@eastsideaudubon.org.

Corvid Crier Becomes an E-newsletter

Continued from page 1

1979, and the Eastside Audubon board hasn't taken lightly the decision to change the way members receive their news. (See the April *Corvid Crier* about the financial and practical reasons for the change.)

We're taking steps to minimize the disruption. Whether or not you can receive email, you'll have ways to stay on top of chapter news and find out about each month's activities.

And if you're an EASer who likes to post the monthly trip schedule on the fridge, you'll be able to do that, too.

To Receive the E-newsletter

If you already receive the *Crier* by email, you don't need to do anything to continue to receive it as an e-newsletter.

If you currently receive the *Crier* in print, please send the email address at which you'd like to receive the e-newsletter to office@eastsideaudubon.org.

Or watch www.eastsideaudubon.org for a tool on the home page that will let you request an e-newsletter subscription.

If You Have No Access to Email

If you have no way to receive email or visit the website, please phone or write a note to our office assistant, Zoe Allen: 425-576-8805 (mailing address below).

We can arrange for you to receive a schedule of each month's activities.

Fridge-friendly Activities Schedule

Each month we'll put a link on our home page to a printable schedule of walks, trips, speakers, and events. Try it now: Go to www.eastsideaudubon.org. In the right-hand column, click May Activities.

If you have a friend in the chapter who cannot access the internet, please consider printing out the activities schedule for him or her.

News Fit to Print

On the website we'll also post the month's news stories and features in a format that will allow you to print them individually. Go to www.eastsideaudubon.org and, in the right-hand column, click Current Headlines.

Again, if you have a friend in the chapter who cannot access the internet, please consider printing and sharing the news.

During this transition, we want to hear your suggestions. Please contact Mary Brisson: mary@marybrisson.net or 425-829-8110.

Eastside Audubon thanks
Jim McRoberts for his gift
in memory of Marje Brening,
an avid birder and his dear friend.

Eastside Audubon Society

Northlake Unitarian Universalist Church
308 4th Avenue South, Kirkland, WA 98083
425-576-8805 www.eastsideaudubon.org

Office hours: Monday, Tuesday, Friday. 9 a.m. – 1 p.m.

*The mission of the Eastside Audubon Society is to protect,
preserve and enhance natural ecosystems
and our communities for the benefit of birds,
other wildlife and people.*

Executive Officers

President	Andy McCormick	amccormick@eastsideaudubon.org
Vice President	Shane Egeland	shane.egeland@gmail.com
Secretary	Linda Gresky	lgresky@gmail.com
Treasurer	Dora Rajkhowa	doraalex@yahoo.com

Board Members and Committee Chairs

Birding	Tricia Kishel	tkishel@eastsideaudubon.org
Communication	Mary Brisson	marybrisson@eastsideaudubon.org
Conservation	Peter Marshall	psmarshall@comcast.net
Education	Open	
Development	Andy McCormick	amccormick@eastsideaudubon.org
Membership	Open	
Volunteers	Open	
At large board member	Diane Crestanello	crestanello@comcast.net
At large board member	Open	

Staff

Office Assistant	Zoe Allen	office@eastsideaudubon.org
------------------	-----------	--

Other Committee Chairs

Photo Group	Larry Engles	engles@ridesoft.com
Bird Questions	MaryFrances Mathis	mf.mathis@comcast.net
Birdathon	Andy McCormick	amccormick@eastsideaudubon.org
Field Trips	Hugh Jennings	h2ouzel@comcast.net
Historian	Bob Gershmel	rwgunret1986@yahoo.com
Holiday Gift Wrap	Leah Morris	leahmo@comcast.net
Hospitality	Claudia Welch	425-827-2548
Webmaster	Mary Brisson	mary@marybrisson.net
Chapter Photographer	Mick Thompson	mthomp1707@comcast.net

Eastside Park Rangers

Ranger Liaison to EAS	Ted Marx	tedmarx@comcast.net
EAS Liaison to Rangers	Jill Keeney	j.keeney@comcast.net

The Corvid Crier, Vol 33, NO 4. Publication Date: May 1, 2013

Published by: Eastside Audubon Society, P.O. Box 3115, Kirkland, WA 98083-3115.
Monthly except January and August. Deadline for material is the first Wednesday of the month preceding publication. Email material to mary@marybrisson.net or send to the address above.

Eastside Audubon Awards \$1,000 in College Scholarships

This year each of two deserving college-bound high school students will receive a \$500 Brian Gershon Scholarship from Eastside Audubon. It's the second year in a row that the Youth Education Committee has selected not one but two outstanding students for this honor.

Jessica Howe

Jessica Howe, a senior at Bothell High School, has been interested in conservation and ecology since she participated in a weeklong



Photo courtesy of Jessica Howe

backpacking trip on the Olympic Peninsula. She has taken several Advanced Placement classes as well as College in the Schools Biology.

She is a member of the National Honor Society and the Earth Club at Bothell High. She has volunteered many hours over six years at Skyview Middle School with

its Outdoor Environmental Learning Center and with Friends of North Creek Forest.

Next year she will be attending Washington State University Honors College. She plans to study Environmental Science and Biology, looking toward advanced degrees in these areas. Congratulations, Jessica.

Nina Lottsfeldt

Nina Lottsfeldt, a senior at Juanita High School, has been interested in animals and ecosystems since childhood. She has

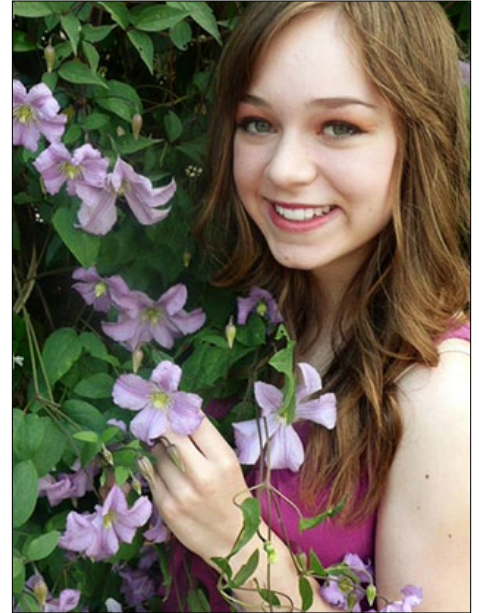


Photo courtesy of Nina Lottsfeldt

taken Advanced Placement Environmental Science and has participated in a research camp in Costa Rica studying rainforest diversity. She also has volunteered at the Seattle Aquarium as an exhibit interpreter. She is a member of the National Honor Society and the Multicultural Club. Next year she plans to attend a school in Washington state, majoring in environmental science, with an emphasis on conservation and

restoration ecology. Our very best to you in your future, Nina.

May 4 (Saturday), 9 a.m. – noon Marymoor Park Habitat Restoration Monthly Work Party

Everyone is welcome as we tackle spring maintenance. Meet at the kiosk of the Audubon BirdLoop at Marymoor Park, Lot G. Parking pass provided. Bring water, snack, gloves, a shovel and/or a rake. Questions? Call the EAS office: 425-576-8805.

Donations Made Easier

If you go to the EAS website to donate for Birdathon, you'll see a change for the better. We now use PayPal, a switch that will save us substantial processing fees and give you a wider choice of credit cards to use.

You don't have to have a PayPal account to use PayPal. It may look that way at first glance, but the option to use your credit card is also there. The choice is yours.

To make a Birdathon donation online, please go to www.eastsideaudubon.org and click **Donate**.

A Day of Family Fun at Juanita Bay Park Saturday, May 4

International Migratory Bird Day
10 a.m. – 2 p.m.
Juanita Bay Park, Kirkland
Free | Open to the community

- Explore with the Eastside Park Rangers
- Play the Migratory Bird Game
- Learn to use binoculars from Omega Photo

Presented by the Eastside Audubon Youth Education Committee



At last year's International Migratory Bird Day celebration, Youth Education Committee members Margaret Lie (left), Jill Keeney, Mary Britton-Simmons, and Diane Crestanello.

Photo by Mick Thompson.



Eagle Eye

VISION CARE, P.S.

17320 135 Ave NE, #D
Woodinville, WA 98072
425-398-1862

See the birds better!



Birdathon, our big fundraising campaign during May, is the only time of year we suggest making a donation to participate in most Eastside Audubon birding walks and field trips. When you go, please bring along a check payable to Eastside Audubon or donate online at www.eastsideaudubon.org.

Want to make your May walks and trips do even more for Birdathon? Consider asking a few friends to pledge a donation for each bird species you'll see on one of these walks.

Or you might choose one of the trip leaders and pledge a donation for every species he or she will see on Birdathon walks. Send a note with your pledge to office@eastsideaudubon.org.

Thank you, and enjoy your Birdathon birding!

May 4 (Saturday), 7:30 a.m.

Nisqually National Wildlife Refuge

\$25 donation to Eastside Audubon for Birdathon

The Nisqually NWR offers a diverse combination of habitats and birds. The delta is bounded by rivers on each side with marshes, deciduous woods, and wide open areas easily accessed by trails and a mile-long boardwalk extending out over the tidal flats. Early spring migrants should be arriving to join regulars such as Great Horned Owls, woodpeckers, and a variety of waterfowl and raptors. Admission is free with qualifying passes (see the [Nisqually NWR](http://www.nisquallynwr.com) website). Meet before 7:30 a.m. at the north end of the Wilburton Park & Ride (I-405, exit 12) to carpool. Bring a lunch. Carpool \$11/passenger. No pre-registration required. Leader: Hugh Jennings, 425-746-6351 or h2ouzel@comcast.net.

May 5 (Sunday), 1 – 2 p.m.

Juanita Bay Park

Family Nature Walk with the Eastside Park Rangers

Birdathon donation does not apply

Eastside Park Rangers lead this easy, one-hour walk on the first Sunday of every month. Free. No pre-registration required. Interpretive tours for community schools and special interest groups also can be scheduled through the EAS office: 425-576-8805.

May 8 (Wednesday), 5 a.m.

Marymoor Park

Dawn Chorus Walk

\$25 donation to Eastside Audubon for Birdathon

This walk can be combined with the 7 a.m. Marymoor Park birding walk for no additional donation. Morning birdsong is a special treat and spring is a wonderful time to hear a wide variety of songs from migrating and resident birds. We will walk slowly and listen for the early singers and those that join the chorus later. We will meet at the East Meadow kiosk at Parking Lot G at 5 a.m. (When entering the park from West Lake Sammamish Parkway, turn right after the soccer fields.) Parking \$1. Bring binoculars and dress for the weather. No pre-registration required. Leader: Andy McCormick, 425-518-0892.

May 8 (Wednesday), 7 a.m.

Marymoor Park

\$25 donation to Eastside Audubon for Birdathon

This walk can be combined with the 5 a.m. Dawn Chorus walk for no additional donation. May brings some of our most beautiful songsters to Marymoor Park, a home for resident birds and a resting place for migrating birds. Following the Audubon BirdLoop, we will walk on level ground for about 2 miles along the Sammamish Slough and through the East Meadow, ending at the Clise Mansion area. Meet at Parking Lot D. (When entering the park from West Lake Sammamish Parkway, turn right at third stop sign.) Parking \$1. Bring binoculars and a snack, and dress for the weather. No pre-registration required. Leader: Andy McCormick, 425-518-0892.

May 11 (Saturday), 6 a.m.

Robinson Canyon

Birding Hike

\$25 donation to Eastside Audubon for Birdathon

Very birdy Robinson Canyon is located in the L.T. Murray State Wildlife Recreation Area in Kittitas County. The Robinson Canyon birding hike is about 6 miles roundtrip with a gradual elevation gain of 1,000 feet. It involves crossing lower Robinson Creek. (Note: We will not cross upper Ainsley Creek or scramble to a viewpoint.) The hike is rated "difficult" in the Desert Hikes book, but really is "moderate." We'll hope to see warblers, flycatchers, vireos, bluebirds, tanagers, and raptors in their spring plumage. We will leave from the Tibbetts Park & Ride in Issaquah at 6 a.m. and return by late afternoon. Carpool \$25/passenger in addition to the Birdathon donation. No pre-registration required. Leader Andy McCormick, 425-518-0892.

Continued on next page

* Discover Pass: \$10 daily/\$30 annual. Can be purchased online at <http://discoverpass.wa.gov> or at a sporting goods store.

Children 8 and older are welcome on all trips; 17 and younger must have adult companion. FRS Radio owners: Please consider bringing them on trips. Find reports of last month's field trips at www.eastsideaudubon.org/birding/field-trips.

Field Trip Meeting Places

Kingsgate Park & Ride

13001 116th Way NE, Kingsgate. I-405, Exit 20B northbound or 20 southbound, take NE 124th Street west to the light at 116th Avenue NE. Turn right a few blocks to the Park & Ride (on the left). Meet in the southeast corner.

Wilburton Park & Ride: I-405, Exit 12

Newport Hills Park & Ride

5115 113th Pl SE, Bellevue. I-405, Exit 9

South Kirkland Park & Ride

10610 NE 38th Place, Kirkland. SR 520, exit 108th Avenue. Travel north onto 108th Avenue NE. Take the second left onto NE 38th Place.

Tibbetts Lot

1675 Newport Way NW, Issaquah. I-90, Exit 15. Turn right (south). Go past the new multi-story Issaquah Park & Ride to the third traffic light. Turn left (east) on Newport Way NW. Go one block, then turn right (south) into the Park & Ride. Meet across the street from the large parking garage at the west end.

Birdathon Birding and May Walks

Continued from previous page

May 13 (Monday), 8 a.m. – noon

Lake Sammamish State Park

\$25 donation to Eastside Audubon for Birdathon

This urban park offers a wide assortment of birds and habitats in its varied ecosystems. The trip involves walking 2 to 3 miles.

Dress appropriately (rainproof in layers; some of the trails can be very muddy if wet). Just inside the main entrance, take the first left into the large parking lot and meet at the northeast end before 8 a.m. A Discover Pass* is required to park. (Walk is free.) No pre-registration required. Leaders: Sharon Aagaard, 425-891-3460, and Stan Wood.



Walk leaders Sharon Aagaard and Stan Wood. Photo by Mick Thompson.

May 18 (Saturday), 5 a.m.

Lake Sammamish State Park

Dawn Chorus Walk

\$25 donation to Eastside Audubon for Birdathon

Morning birdsong is a special treat and spring is a wonderful time to hear a wide variety of songs from migrating and resident birds. We will walk slowly and listen for the early singers and those that join the chorus later. Just inside the main entrance, take the first left into the large parking lot and meet at the northeast end. A Discover Pass* is required to park. Bring binoculars and dress for the weather. No pre-registration required. Leader: Andy McCormick, 425-518-0892.

May 18 (Saturday), 10 a.m.

Lake Sammamish State Park

Family Birding Walk

Optional donation to Eastside Audubon for Birdathon

This easy walk is perfect for families with children, and the park offers an assortment of birds and habitats which allow us to get close to many of them. The walk covers about 2 miles along walkways and groomed trails, and the length of the trip will be adjusted depending on the participants. Dress appropriately (rainproof in layers; some of the trails can be very muddy if wet). Just inside the main entrance, take the first left into the large parking lot and meet at the northeast end before 10 a.m. A Discover Pass* is required to park. No pre-registration required. Leader: Andy McCormick, 425-518-0892.

May 19 (Sunday), 8 a.m. – 1 p.m.

Discovery Park

\$25 donation to Eastside Audubon for Birdathon

This is one of the leader's favorite parks in Seattle. The park is composed of 530 acres of varying habitats that include saltwater

beaches, meadows, wetlands, fresh water ponds, and mixed forests, all on a bluff in Magnolia. It is a true treasure of the area. It is home to 90 species of birds. Residents include Anna's Hummingbird, California Quail, and Hutton's Vireo, which are joined in the spring by flycatchers, swallows, and warblers. Bring a lunch if you wish, snacks, drinks, binoculars, and good spirits! Meet before 8 a.m. at the north end of the Wilburton Park & Ride (I-405, exit 12). We'll be back about 1 p.m. Carpool \$4/passenger. No pre-registration required. Leader: Tricia Kishel, 206-948-3922.

May 21 (Tuesday), 8 a.m. – noon

Juanita Bay Park

\$25 donation to Eastside Audubon for Birdathon

See what birds are in the park and on the bay. Varied habitats within the park host a vast array of species, and the quiet of an early morning is one of the best times to explore. We'll look for spring migrants and resident birds, as well as raptors and waterfowl. Bring binoculars and meet in the parking lot before 8 a.m. No pre-registration required. Leader: MaryFrances Mathis, 425-922-9524.

May 23 (Thursday), 6:40 a.m.

Whidbey Island with the Fidgety Flickers

\$25 donation to Eastside Audubon for Birdathon

Take a day to hop a ferry to Whidbey Island and search lagoons, marshes, lakes, and parks for shorebirds, sky birds, and any spring bird that may be out and about. Dress for the weather, bring lunch and snacks. The Fidgety Flickers are to meet before 6:40 a.m. at the south end of the Kingsgate Park & Ride for a 7:30 a.m. ferry. Carpool \$17/passenger plus share in ferry cost. Limited to 6 people in 2 cars. One participant will need to volunteer to drive. Leaders: Joyce Meyer and Mike West. Pre-registration required: Please phone the Eastside Audubon Office, 425-576-8805.

May 25 (Saturday), 7 a.m. – 5 p.m.

Urban Birding by Bus with the Greener Herons

\$25 donation to Eastside Audubon for Birdathon

We are excited to offer a Green Birding option for this year's Birdathon. We'll look for birds along Metro Bus routes for this urban birding trip. We'll experience birds in the urban wetlands of the Mercer Slough and the Bellevue Downtown Park before moving on to Marymoor Park, a King County Park in Redmond. Meet at the south end of the South Bellevue Park & Ride at 7 a.m. We'll return by bus by 5 p.m. Restroom facilities are limited at Mercer Slough Nature Park. Bring binoculars, lunch, and snacks and dress for the weather. Bus fare is provided. No pre-registration required. Leader: Shane Egeland, 206-953-3309.

May 27 (Monday), 9 a.m. – noon

Birding the Hot Spots of King County

Birdathon donation does not apply

Monthly field trip on the fourth Monday to wherever the birds are. Meet before 9 a.m. at the north end of the Newport Hills P&R and plan to be back by noon. Carpool \$2 – \$4/passenger. No pre-registration required. Leader: Hugh Jennings, 425-746-6351.

Annual EAS Rufous Hummer Count Runs May 31 through June 3

Rufous Hummingbirds have been in our service area since March and we are making plans for the second annual Eastside Audubon Rufous Hummingbird Count to be held over the first weekend in June.

You can count hummingbirds at your feeder and other places from Friday, May 31, through the following Monday, June 3, and send in your reports. The first count last year was very successful and we would like to get even more people involved this year in looking for Rufous Hummingbirds in the EAS service area.

What to record

- Number of birds that you see at one time or you know for certain are different birds, for example, you see females together and a male comes in later

- Number of males and females
- Location (name of park or area and city or town)
- Day of the week
- Time of day
- Your name

How to report

Call your sightings to either Leslie Waters, 425-442-7681, or Pete Marshall, 425 453-9287. Or email to amccormick@eastsideaudubon.org.

We'll be checking eBird and adding any postings from our service area to our census. If you normally post to eBird, do so; then please also report to us and let us know you've posted to eBird so we won't double count.

National Audubon Launches Citizen Project to Track Hummingbirds in Spring

As the climate changes and temperatures warm, some flowers are blooming as early as 17 days before migrating hummingbirds arrive. The impact for migrating and breeding hummingbirds is unknown.

To study the question, the National Audubon Society (NAS) is launching a new citizen science project, Hummingbirds at Home.

Your family can be part of this effort to document hummingbird sightings across the country in spring, sending observations to NAS from a mobile app created for Hummingbirds at Home or from your computer. The free app also will help you identify bird species and the plants that feed them.

You can participate in Hummingbirds at Home as it fits your schedule, watching hummingbirds once or over several weekends.

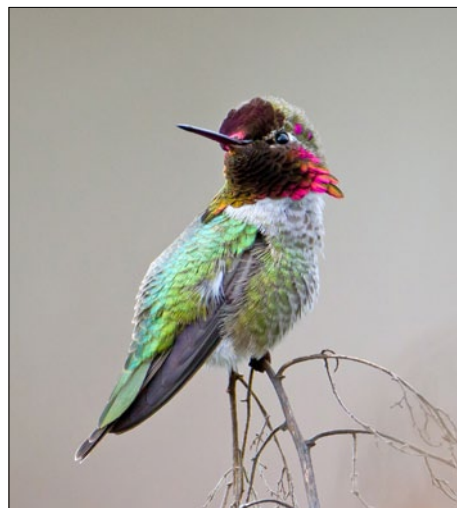
Hummingbirds at Home is the newest in a calendar of NAS citizen science projects that also includes the Christmas Bird Count and the Great Backyard Bird Count.

"Every year, many hummingbird species make a remarkable journey north during springtime," said Dr. Gary Langham, Chief

Scientist for Audubon, "but will their arrival time be in sync with the blossoms?"

Data from Hummingbirds at Home will help Audubon focus its conservation efforts where birds are most affected. "This is a fun, family-friendly citizen science project that works in the classroom or in the kitchen," Dr. Langham said.

Learn more online at www.audubon.org/citizenscience.



Anna's Hummingbird by Mick Thompson. Rufous (above) and Anna's are the two hummers we normally see in our area.



Rufous Hummingbird on a Red Flowering Currant by Dan Streiffert

So, keep your feeder filled and watch for the RUHUs over the first June weekend.

We will also have two field trips specifically organized to locate Rufous Hummingbirds during the count period. Watch the website and the June *Corvid Crier* for the schedule of trips.



Mimi Gresky and her mom, Linda, practice their skills for Birdathon. Photo by Mick Thompson.

Trips and Tools for Birdathon 2013

Continued from page 1

donation. (Details at www.eastsideaudubon.org/calendar, May 5.)

Dawn chorus walks. Celebrating the glory of spring birdsong. (See pages 4 and 5.)

Birdathon Toolkit: Tips for getting pledges, sample pledge letters you can copy, and how to find birders who need your pledge. All at www.eastsideaudubon.org.

For inspiration to create your own personal Birdathon, see page 7.

Common Yellowthroat (*Geothlypis trichas*)

Length	5 inches
Wingspan	6.75 inches
Weight	0.35 ounce (10 grams)
AOU band code	COYE

“Abundant and well-known, the Common Yellowthroat has succeeded by being a nonconformist. As the only one of our warblers that will nest in open marshes, it is found in practically every reed-bed and patch of cattails from coast to coast” (Kaufman, p. 550).

The Common Yellowthroat does not mind getting its feet wet and will almost always be found close to water, where it forages in muddy areas for a wide variety of insects including damselflies, dragonflies, small grasshoppers, beetles, caterpillars, moths, flies, and spiders. It is an active species and birders can get a full view of it when it sings *witchity-witchity-witchity-wich* from the top of a cattail or shrub to claim its territory. Despite frequently singing, the yellowthroat can also be very difficult to see as it skulks in the lower and thicker parts of its habitat. Its behavior has been compared to that of a wren, and it will often cock its tail.



Common Yellowthroat by Mick Thompson

The male yellowthroat has a dramatic black mask set off by a white border above and a bright yellow throat below. The crown and back are olive. The female has no mask and a smaller yellow throat patch, and is well camouflaged in shades of olive and brown. In late summer juvenile males have some black on the face as a precursor to a mask which will molt in the spring.

The Common Yellowthroat is in the genus *Geothlypis*, earth finch, from the Greek, *ge*, earth or land, and the obscure *thlypis*, a type of finch (Holloway). Of course, we now know that the bird is not a finch at all. The species name *trichas*, is also from the Greek, *trikhas*, song-thrush, and we also know that the bird is not a thrush. So what is a warbler? According to Dunn and Garrett, warblers are better referred to as wood-warblers to avoid con-

fusion with Old World warblers which are related to thrushes. Wood-warblers are found only in the New World and are “small, primarily insectivorous songbirds” (Dunn & Garrett). The most recent DNA testing indicates they may be most closely related to blackbirds.

Yellowthroats arrive in Washington in mid-April. The female builds a nest close to the ground, making an open cup of grasses, sedges, various weeds, and leaves, and lining it with fine grass and some hair. Usually three to five creamy-white eggs with brown spots are deposited. Only the female incubates, for 12 days, and the male feeds her during this time. Hatchlings are fed by both parents and leave the nest in about 10 days. Some pairs can have two broods per year (Kaufman).

Fall migration for the yellowthroat is casual, with some birds lingering in northern areas into October. The species is so widespread that yellowthroats use all four North American flyways. Western birds are likely to use the coastal aspect of the Pacific flyway and winter in Mexico and Central America. You can hear the song of a California Common Yellowthroat interspersed with call notes online at the Macaulay Library: <http://macaulaylibrary.org>.

References available from amccormick@eastsideaudubon.org.

Create Your Own Birdathon in 2013

If you’ve thought that earning Birdathon pledges was for master birders with big contact lists and time to bird for 24 hours at a stretch, we have good news. You can do it any way, anywhere, any time you like.

Birding for pledges means setting aside some time in May to bird and asking a few friends to make a donation for each species you see. Multiply a few birds by a few friends and you can make an important contribution.

If you’re not comfortable asking others for pledges, just pledge to yourself and go out to enjoy birding your way.

Here’s a recap of some ideas that may inspire your own original Birdathon:

- On May 4, take a walk in Juanita Bay Park with the Eastside Park Rangers at our International Migratory Bird Day festival, and count the species you see there. (See page 3.)
- Print out our Common Neighborhood Birds checklist and go on a bird scavenger hunt with your family. (Find a link to the checklist at www.eastsideaudubon.org.)
- Make Birdathon a reason to get up from your desk every day during work and find a few birds during lunch.

To get more ideas and tips for creating your very own Birdathon, visit www.eastsideaudubon.org.

Eastside Audubon Society
P. O. Box 3115
Kirkland, WA 98083-3115

Address Service Requested

NONPROFIT ORG
US POSTAGE
PAID
KIRKLAND, WA
PERMIT NO. 308

Yes! I'll support Eastside Audubon to preserve bird habitat and educate our community with my tax-deductible membership. Mail form to: Eastside Audubon
P. O. Box 3115
Kirkland, WA 98083-3115

- \$25* Individual \$250 Heron Club
- \$40* Family \$500 Osprey Club
- \$100 Goldfinch Club \$1,000 Eagle Club

* Individual and Family members, please add \$12 to receive the Corvid Crier in print by mail. Your Goldfinch Club or higher level membership helps support our camp scholarship fund for low-income children, our college scholarship fund, grants to teachers, and habitat conservation.

Enclosed is my check made payable to: **Eastside Audubon**

Please charge my: ___ MasterCard ___ Visa

Number _____ Exp Date _____

Signature _____ Date _____

Name _____ Telephone (day/eve) _____

Address _____ City _____ State _____

Email _____ Zip + Ext _____

- Please send me the Corvid Crier in print. (Add \$12 to Individual or Family dues.)
- My employer matches contributions. I am sending/will send matching information to you.

Please add me to your email lists for:

- Conservation updates and action alerts
- Volunteer opportunities

Planned Giving
Please consider a planned gift to Eastside Audubon to support environmental education and conservation for generations to come. Because Eastside Audubon is a 501(c)(3) nonprofit organization, your charitable gift will be tax deductible. You may designate your gift to support our general programming or for the permanent endowment fund. Remember: 100 percent of your contribution will go to fund the programs of Eastside Audubon.

- I would like information about making a planned gift
- I have included Eastside Audubon in my will

